

How to put the DVR online

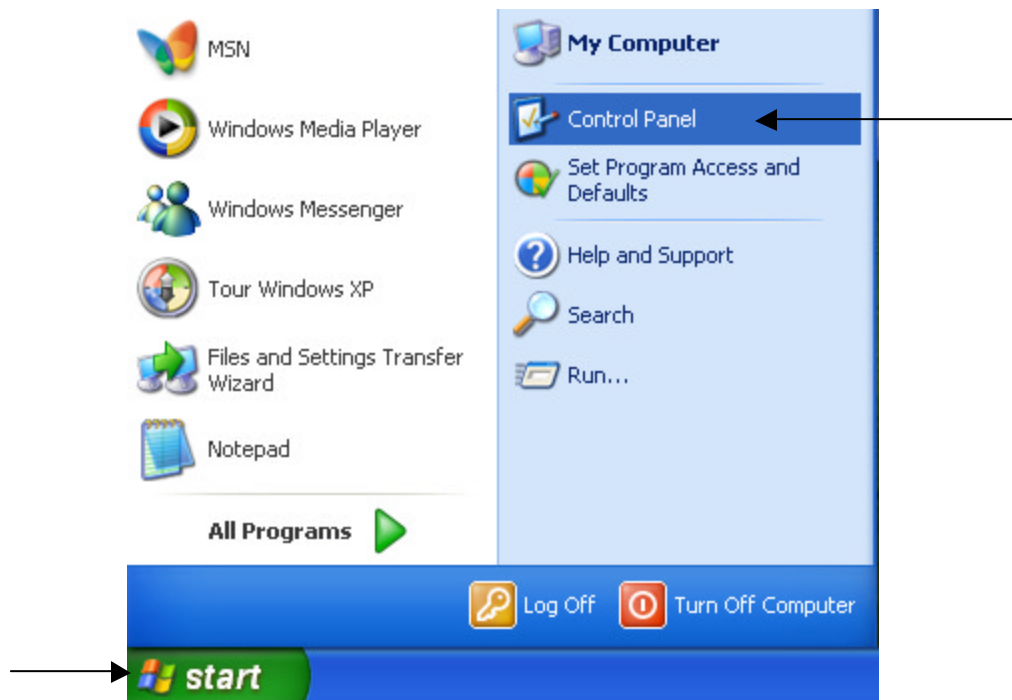
They are 3 steps required in order to get your DVR online and have users logged in remotely.

WE STRONGLY RECOMMEND USING A ROUTER TO AVOID VIRUS AND OTHER COMPLICATIONS.

Step 1

(Skip this step if your DVR connected directly to your modem)

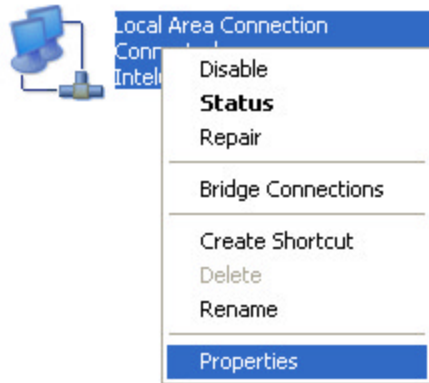
- a) You must assign a static **local** IP address to the DVR.
 - I. Click on "Start" button and then click on "Control Panel"



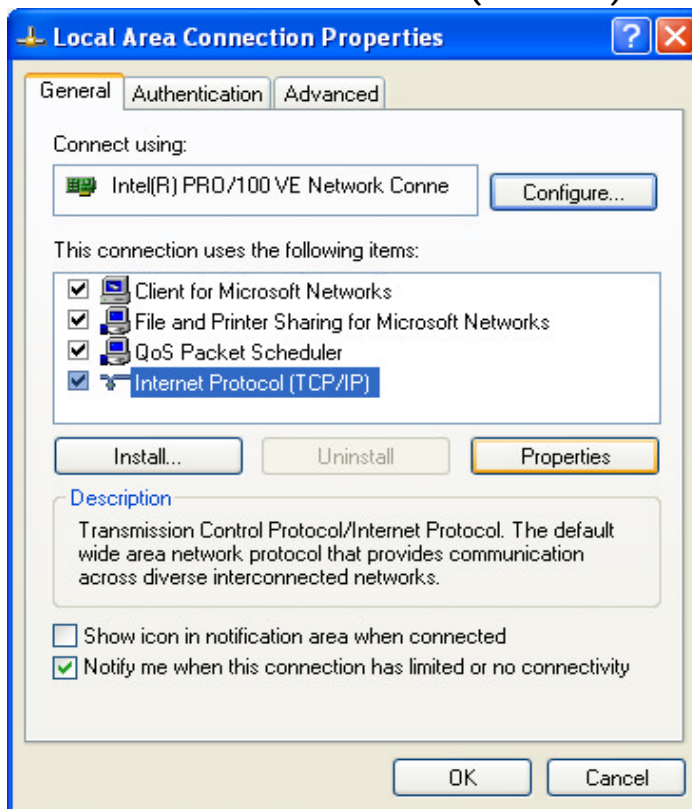
- II. Double click on "Network Connections"



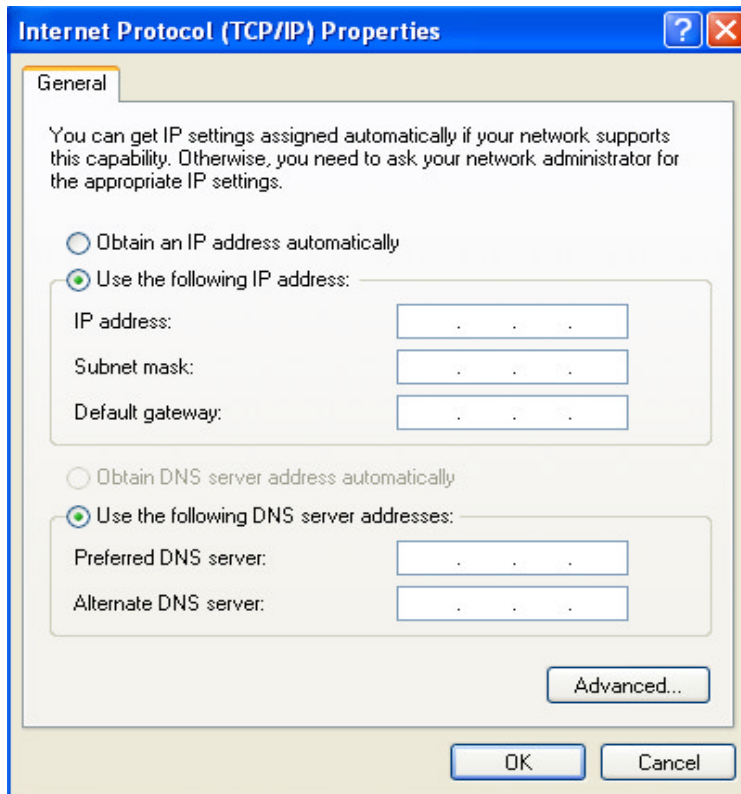
III. Right click on the network connection and click on "Properties"



IV. Click on "Internet Protocol (TCP/IP)" then click on "Properties"



V. Click on "Use the following IP addresses". Enter the relevant information in the field. (Please contact your network administrator, or refer to page 10,11,12)



Step 2.

(Please skip this step if you are not using a Router)

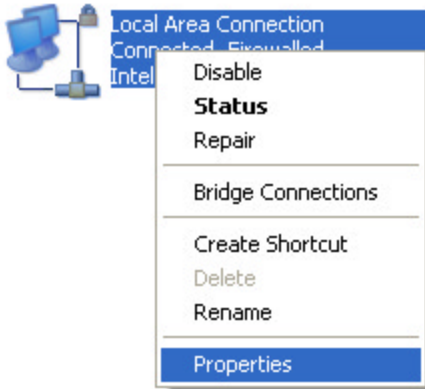
b) Open and forward ports from the router to the DVR. (For more router details go to Page # 12)

Port Range	Reason
3000-3003,3007 TCP	Video transmission
3004-3005 UDP	Remote Notification
8800-8801 TCP	Audio Transmission
80 TCP	Direct Web (Web Server)

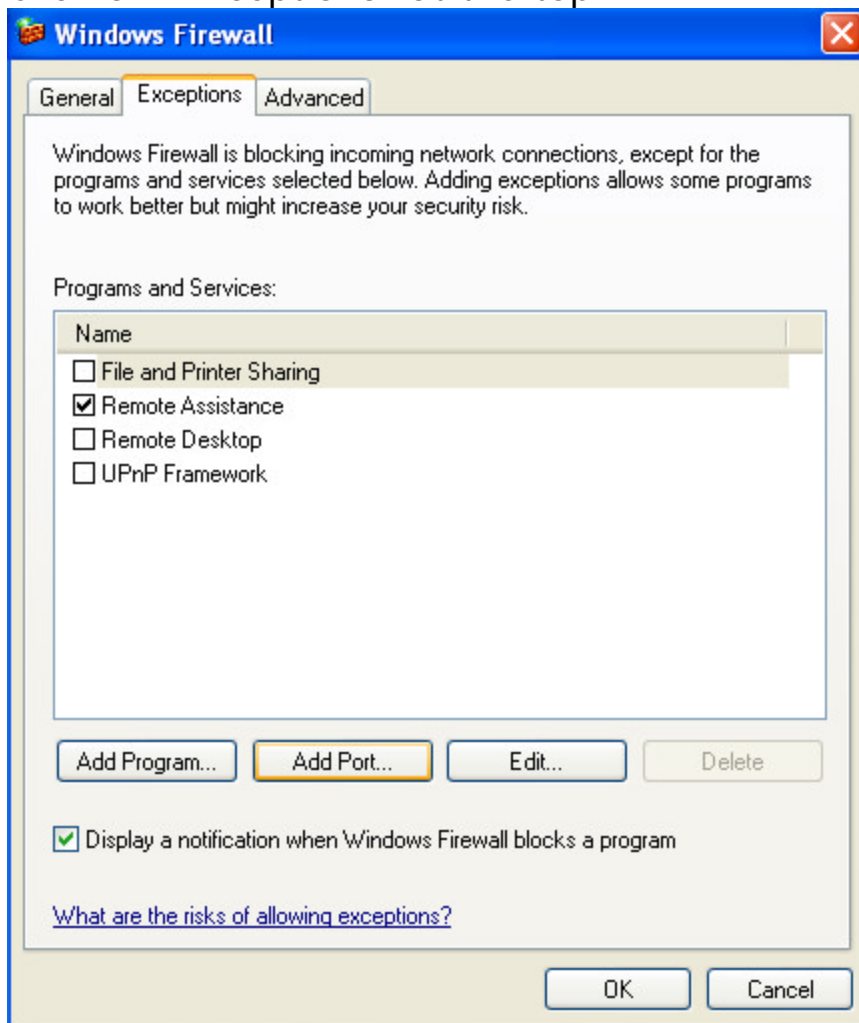
Step 2b

2. If you are using Windows, SP2 “Internet Connection Firewall”:

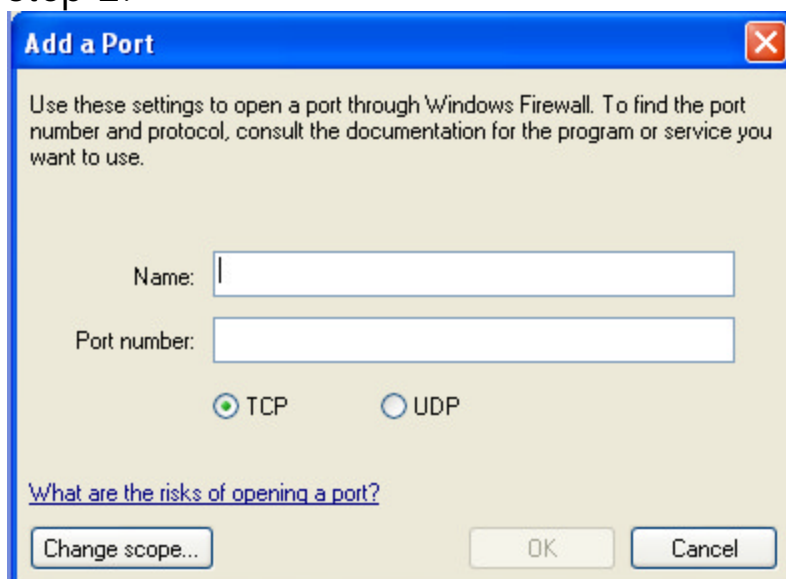
- a) Locate the Network Connection icon, right click on it and then click on “Properties” (See Step 1).



b) Click on "Exceptions" at the top

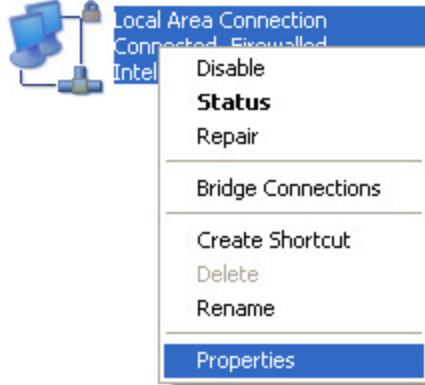


c) Click on "Add Port" and individually enter the ports mentioned in step 2.

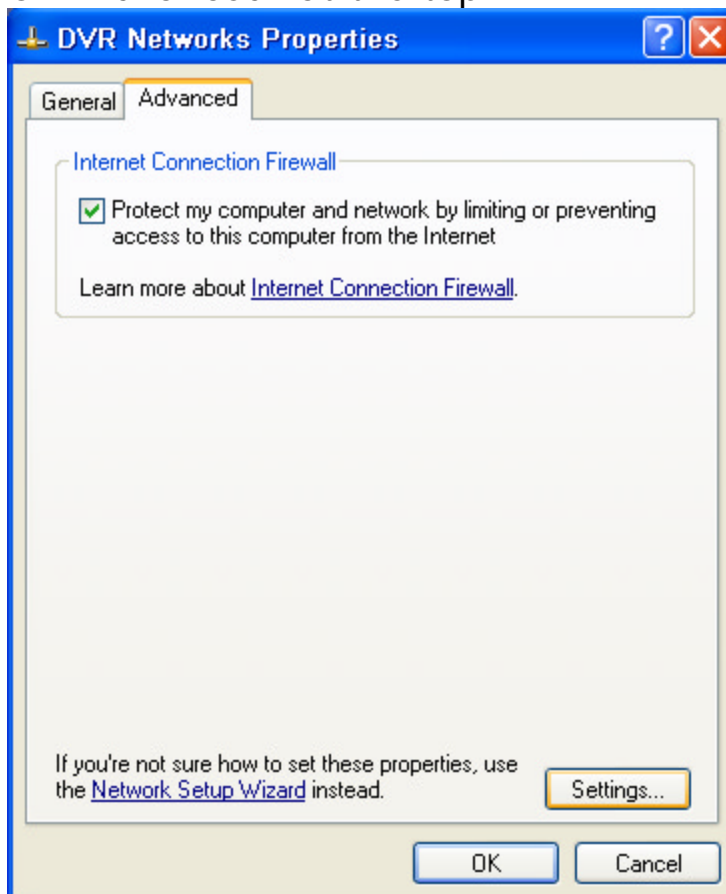


3. If you are using Windows "Internet Connection Firewall" (NOT SP2):

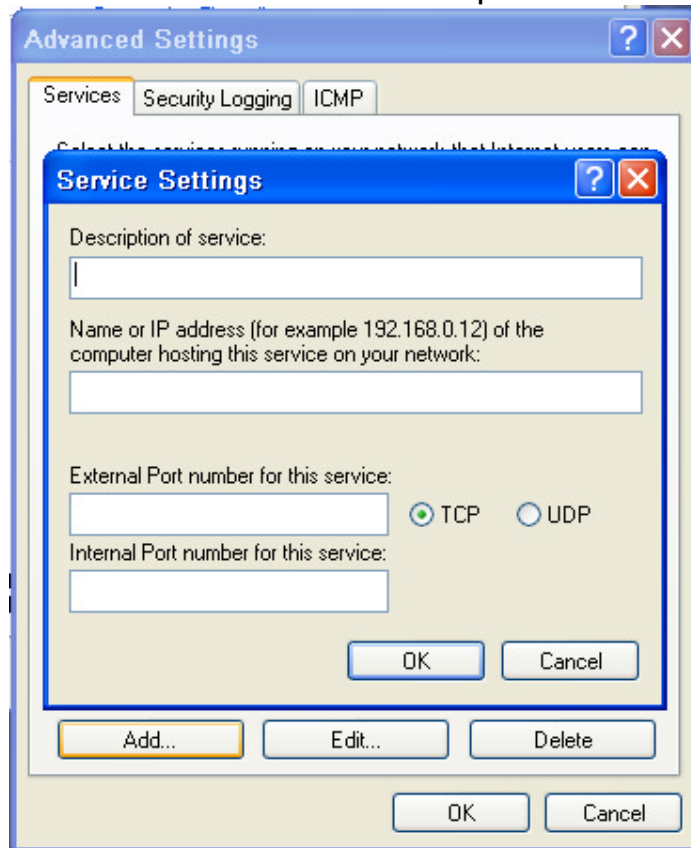
- a) Locate the Network Connection icon, right click on it and then click on "Properties" (See Step 1)




- b) Click on "Advanced" at the top



- c) Click on "Add" and individually enter the ports mentioned in Sep 2, for the "IP address", enter the IP address used in step 1a-V. And the internal and external ports need to be the same.



4. Ensure the DVR can connect to the Internet by opening Internet explorer. 

Step 3.

5. Register on Dynamic DVR website:

(If you are using a STATIC IP Address scheme, please skip this step)

- a) Open internet explore and go to www.dynamicdvr.com
- b) Click on "Register Online".
- c) Fill the form completely.

NOTE: 1 - "Site name (Code)" Should be up to 10 digits long. It should not contain characters like (\ /: *? " < > |)
2 - The Code is case sensitive.

- d) Click on "Save"

PLEASE ADJUST SETTINGS ON THE DVR SYSTEM TO MATCH THIS CODE

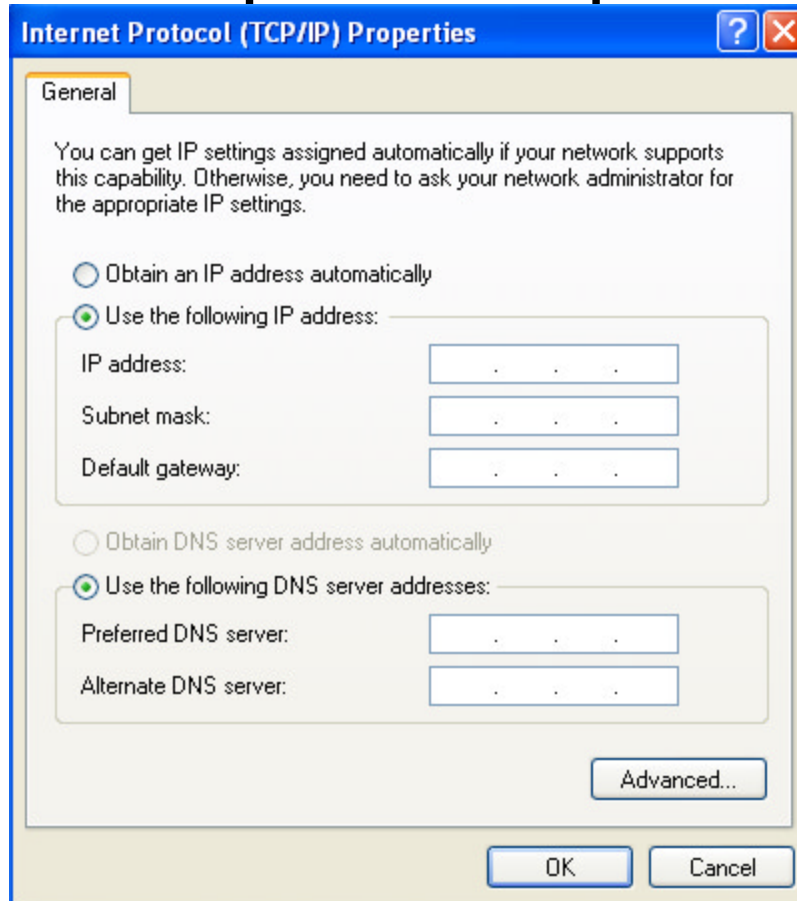
STEP 3b

6. Enter the code and IP settings in the DVR program.

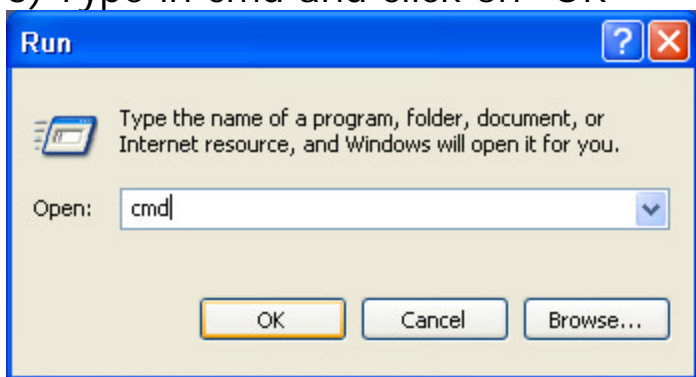
- a) Open "DVR Settings"
- b) Log in using the administrative user name and password
- c) Click on "System"
- d) Under "Network" Section:
 - I. Ensure "Allow Remote Connection" is selected
 - II. In the section of "Code" enter the Code registered at Dynamic DVR in step 5
 - III. Select "Use IP Server"
 - IV. Click on "Properties"
 - V. For "IP server" type: 66.163.26.241
 - VI. Set the notify time to 1 minute
- e) Click "OK" and then "Save and Close"

Additional Information:

How to determine the IP address numbers and other numbers required for step 1:



- 1) Click on Start
- 2) Click on Run
- 3) Type in cmd and click on "OK"



- 4) Type in "ipconfig/all".
- 5) Write down the IP address for the "Default Gateway" and the "DNS Servers"(there may be 2 DNS servers)

```
C:\WINDOWS\System32\cmd.exe
Microsoft Windows XP [Version 5.1.2600]
(C) Copyright 1985-2001 Microsoft Corp.

C:\Documents and Settings\Administrator>ipconfig/all

Windows IP Configuration

    Host Name . . . . . : DUR
    Primary Dns Suffix . . . . . :
    Node Type . . . . . : Unknown
    IP Routing Enabled. . . . . : No
    WINS Proxy Enabled. . . . . : No

Ethernet adapter DUR Networks:
on #2:

    Connection-specific DNS Suffix . :
    Description . . . . . : Intel(R) PRO/100 UE Network Connecti
    Physical Address. . . . . : 00-11-11-1C-50-49
    Dhcp Enabled. . . . . : Yes
    Autoconfiguration Enabled . . . . : Yes
    IP Address. . . . . : 192.168.1.115
    Subnet Mask . . . . . : 255.255.255.0
    Default Gateway . . . . . : 192.168.1.1
    DHCP Server . . . . . : 192.168.1.1
    DNS Servers . . . . . : 192.168.1.1
    Lease Obtained. . . . . : Wednesday, December 01, 2004 1:16:12
    PM
    Lease Expires . . . . . : Wednesday, December 08, 2004 1:16:12
    PM

C:\Documents and Settings\Administrator>
```

NOTE: The Default Gateway number is the IP address of your Router.

- 6) Now we have the required information for step 1.
 - a. For IP Address – type the same number as the "Default Gateway", BUT change the last number to one more. (Example: 192.168.1.1 should be 192.168.1.2)
 - b. Subnet mast should appear automatically once the IP address is entered. If it does not entered the same subnet number as it appears in the black "cmd" window above the default Gateway.
 - c. For default Gateway enter the information from the black "cmd" window.

- d. For the DNS server numbers, enter the information from the black "cmd" window.

If you are having difficulties obtaining the DNS numbers, the Default Gateway number or figuring out the IP Address. Please contact your Network Administrator or the router company. (Details about routers is on Page # 12)

- For DNS Sever numbers: Look in the "Status" section of the router.
- For the Default Gateway: That is the same as the IP address of your router.
- For the IP address: Look at the DHCP section of the router and pick a number outside the DHCP range mentioned.

Please Note:

The above issues are ***purely network issues***. You should consult your router company or your Internet provider for details on these issues. The DVR software operates independent of the network configurations.

Router Information and details:

If you are having difficulties configuring the router, Please call the competent technical support department of the router company. Some toll free numbers of the most popular routers are listed below. For other routers please refer to the manual that came with the router.

D-Link: 1 (877) 453-5465

LinkSys: 1 (800) 326-7114

SMC: 1 (800) 762-4968

Net gear: 1-888-NETGEAR